



Ankle arthritis...

is categorized into three types:

- **Osteoarthritis** – degenerative arthritis that develops with age and wear of the joints
- **Inflammatory arthritis** – arthritis caused by an immune response that impacts the lining of the joint
- **Post-traumatic arthritis** – arthritis that develops after injury to the joint or associated bones resulting in the deterioration of joint cartilage

Depending on the diagnosis provided by your doctor, the treatment pathway may vary, but in many cases the symptoms may include:

- Tenderness or pain
- Reduced ability to walk
- Stiffness or swelling of the joint

It is important to discuss all possible treatment options with your surgeon, which may include operative or non-operative measures that include but are not limited to:

- Braces or orthotics
- Physical therapy
- Injections
- Medication
- Joint fusion
- Arthroscopic surgery
- Total ankle replacement



QUANTUM
Total Ankle System

OrthoPlanify
Patient Specific Instrumentation



A GLOBAL EXTREMITY COMPANY

The QUANTUM® Total Ankle System is manufactured by:

In2Bones SAS
28, chemin du Petit Bois
69130 Ecully – FRANCE
Tel: +33 (0)4 72 29 26 26
Fax: +33 (0)4 72 29 26 29

The system is distributed by:

In2Bones USA
6000 Poplar Ave, Suite 115
Memphis, TN 38119
www.in2bones.com

Please note: The information and images enclosed are provided for reference purposes only. This is not created or intended as self-diagnostic or self-treatment protocol. Review your conditions with your physician who will recommend the best treatment option[s] based on individual assessment. Each surgeon must evaluate the appropriateness of specific devices and/or techniques based on his or her own medical training, clinical judgment, surgical experience and specific patient indications. Proper surgical techniques and procedures are the responsibility of the medical professional. In2Bones cannot recommend a device or procedure that is suitable for all patients. Product specific indications, contraindications, warnings, and precautions are listed in the product package insert and should be reviewed by the physician and operating room personnel.

QUANTUM, OrthoPlanify, the In2Bones name and logo are trademarks of In2Bones or its affiliates. In2Bones USA Memphis TN, 38119 USA / In2Bones SAS, 69130 Ecully, France - © 2021 In2Bones USA, Memphis, TN • Patent Pending • All rights reserved

© In2Bones, Memphis, TN, 38119 - QTAR-A - 1121

Treating Ankle Arthritis

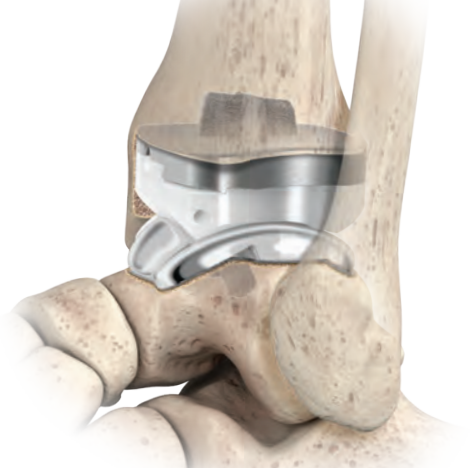


QUANTUM
Total Ankle System

with

OrthoPlanify[™]

Patient Specific Instrumentation



What is Total Ankle Replacement?

Total Ankle Replacement involves the surgical removal of diseased bone and cartilage to facilitate the placement of implants that are designed to alleviate the symptoms of ankle arthritis and provide a pathway to regaining mobility.



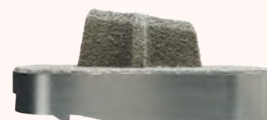
It should be noted that not all patients will be candidates for Total Ankle Replacement.

It is important to discuss all possible treatment options with your doctor to determine if ankle replacement is right for you.

If your doctor determines that surgery is the best option for treatment of your ankle, you may want to consider the QUANTUM® Total Ankle System.

The QUANTUM Total Ankle System is comprised of tibial and talar implants that are designed to work together to provide a pathway for pain reduction and restoration of mobility.

Your surgeon will follow a US FDA cleared technique using precision instrumentation during the surgery.



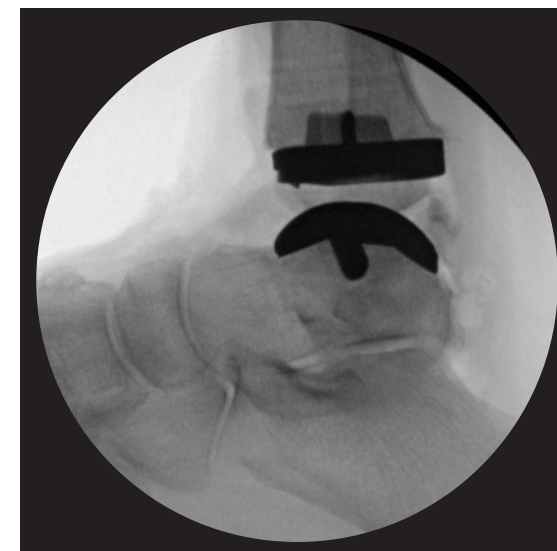
The titanium alloy **QUANTUM Tibial Tray** is attached to the tibia and is designed to provide a large surface area for contact with your tibial bone while using a vertical cross-stem for fixation and stability once implanted.



The ultra-high molecular weight polyethylene (UHMWPE) **QUANTUM Tibial Insert** is connected to the Tibial Tray. The Tibial Insert moves smoothly across the Talar Implant as you go about your daily activities.



The cobalt chrome **QUANTUM Talar Implant** comes in Standard and Flat-Cut varieties and is designed to help replicate the motion of a healthy ankle joint.



Your surgeon may decide to use **OrthoPlanify Patient Specific Instrumentation**.

This proprietary software system provides your surgeon with a 3D reconstruction of your ankle to plan where your implant will be placed before surgery.

Your surgeon will use 3D-printed custom cutting and alignment blocks to reproduce the plan during surgery.

